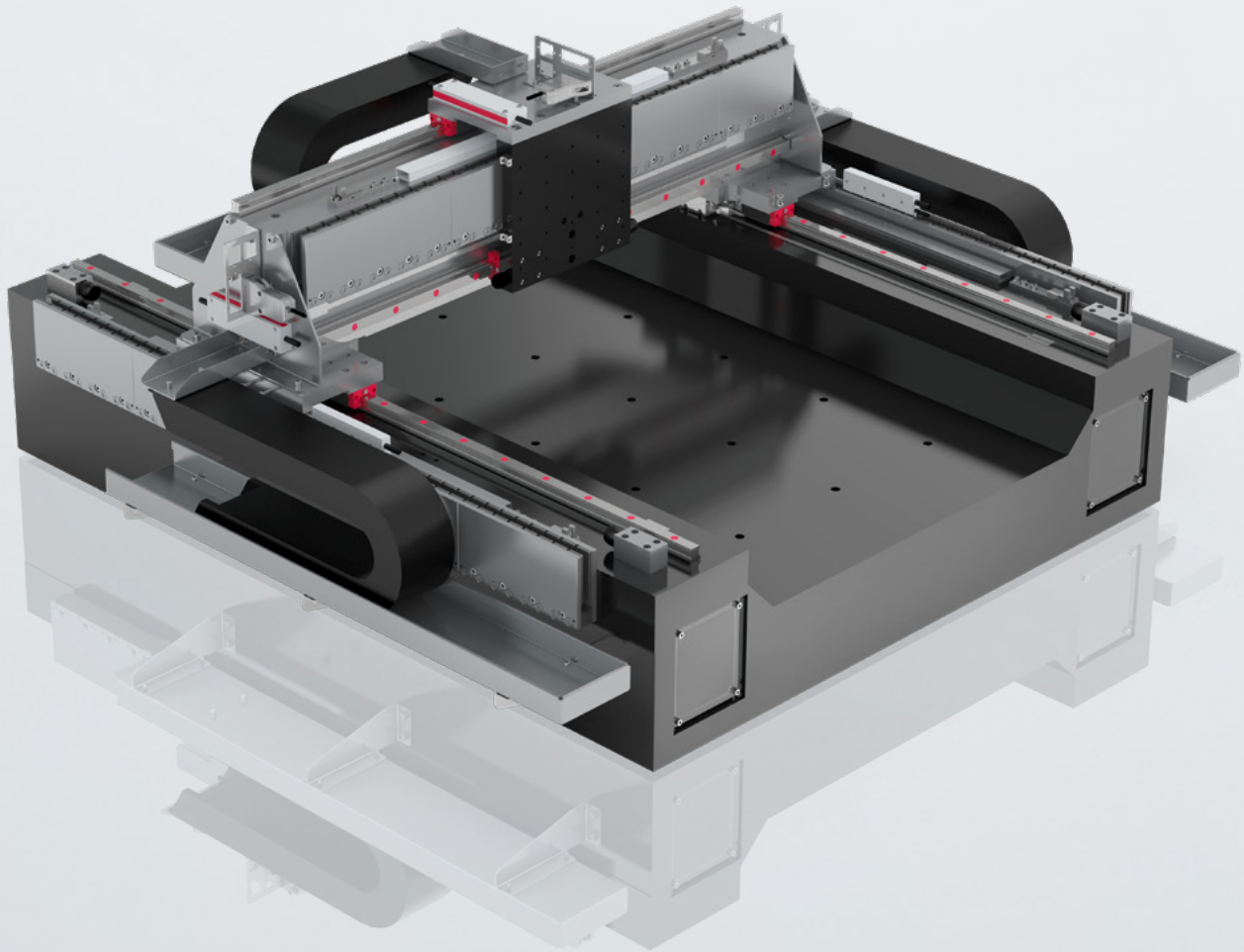


# SCHNEEBERGER



## Positioning systems

Close to our customers throughout the world

Product catalog

## OUR COMPLETE POSITIONING SYSTEM

# Close to our customers throughout the world.

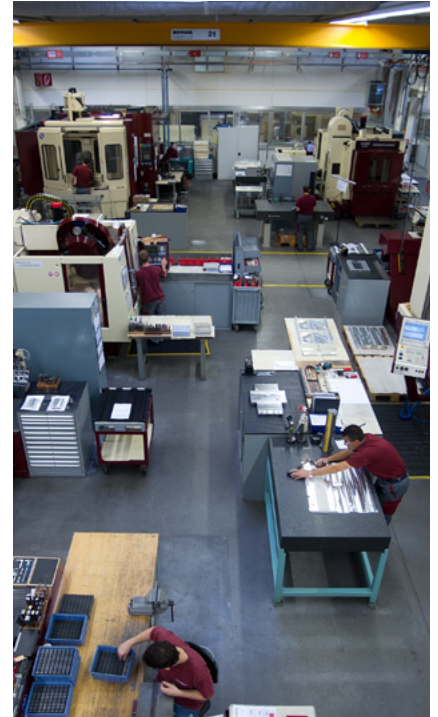
SCHNEEBERGER Systems is your reliable partner.



Roggwil (Switzerland): Head office of the company SCHNEEBERGER, business unit headquarters



Development of system solutions, in close collaboration with customers



Manufacturing using its own, well-equipped stock of machinery

**For many years the name SCHNEEBERGER has been synonymous with high-precision and reliable linear motion technology for high-end machinery and equipment. Ground-breaking innovations bear witness to the high level of engineering expertise and technical excellence, which have allowed the family business to maintain its position at the peak of a highly competitive market since 1945.**

Our global presence with strong sales and support organisations ensures we remain close to our customers in all major industrialised countries. In addition to the comprehensive innovative services, we will guarantee you dedicated on-site support starting even from the project design and planning phase, as you would expect from an ambitious family business.

In its positioning systems SCHNEEBERGER Systems uses the tried and tested components and expertise of SCHNEEBERGER linear motion technology and mineral casting, and is able to consistently implement these diverse resources into customer-specific total solutions.

## CORE COMPETENCIES

# Tailored for every customer.

Thanks to its high level of engineering expertise, SCHNEEBERGER is also able to control complex motion systems with great precision.

**In SCHNEEBERGER you have a partner who will supply you with well thought-out solutions for your entire motion and positioning requirements for many different applications. We rely on expertise in three core fields:**

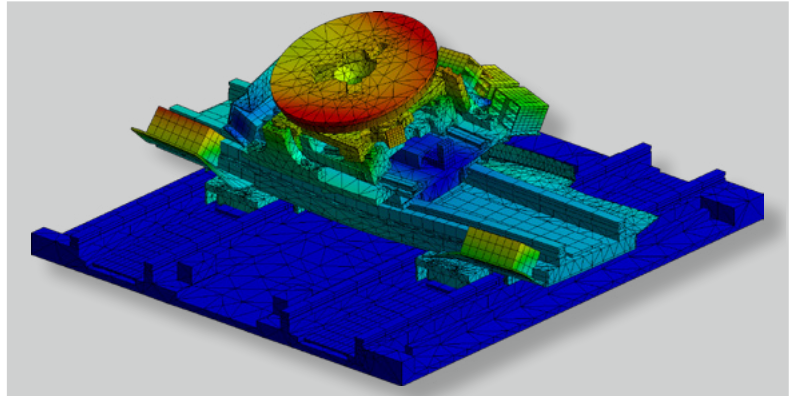
– **Engineering know-how:** We plan projects for and develop highly complex positioning systems, including those for particularly demanding applications, such as high-vacuum environments.

– **Application know-how:** We have successfully tested a range of system approaches in many different industries and under a range of conditions. On this basis, we work together with our customers to evaluate the optimum products and project-specific solutions.

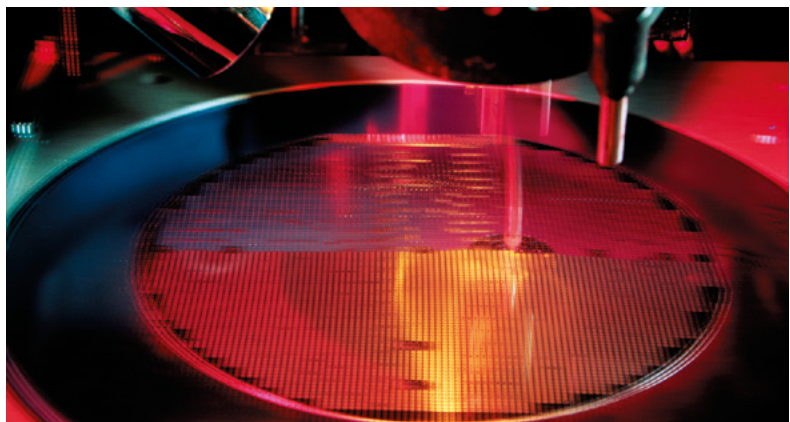
– **Manufacturing and integration know-how:** We manufacture mechanical sub-assemblies and assemble highly complex, high-precision systems, while guaranteeing a very secure source of supply.

Using our standard component range, we are able to produce tailored solutions within a very short time frame: From single axes with integrated control units to highly complex systems based on mineral cast constructions. When it comes to integration, we always go just as far as the customer wants us to.

Manufacturing and integration know-how:  
high-precision assembly and testing in cleanroom conditions



Engineering know-how: FEM analyses coordinated for each individual customer and project



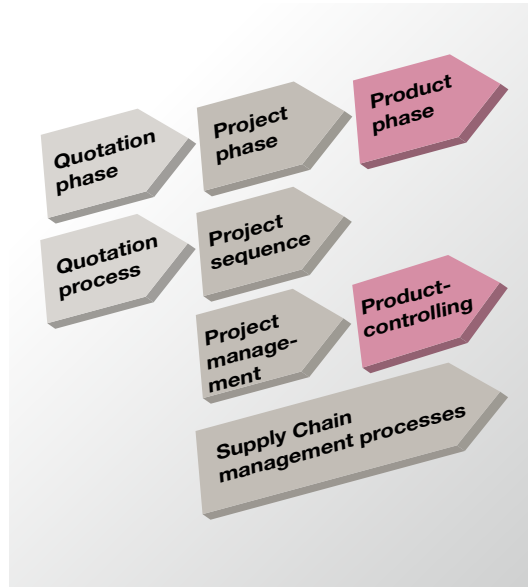
Application know-how:  
Process analysis and intelligence directly contribute to the solutions being developed







The tailor-made solution to meet every customer requirement



Optimised delivery deadlines based on specific, certified processes



## TRACK RECORD

# Five key customer benefits at a glance.

SCHNEEBERGER not only stands for technical excellence, but also for specific customer solutions. SCHNEEBERGER Systems offers customers tailor-made total solutions of unparalleled quality and reliability. If you decide to use our products, you will enjoy the five benefits of key competitive advantage.

### 1. We offer a solution for the specific customer problem.

For every problem we will provide you with a specific solution, not a standard solution, but one optimised to meet customer specifications. To do this, in each case we can call upon the appropriate components and materials available within the SCHNEEBERGER Group, our proven profile guideways, for example, or mineral casting constructions.

### 2. We offer fast and flexible development.

We have at our disposal extensive industrial and engineering know-how in all areas in which we offer our system applications. This allows our powerful project teams to develop systems not only without any unwanted delays, but ensuring customer-specific requirements and requests are at all times flexibly incorporated into system development. Our complete customer-specific positioning systems will already be operational just two to four months following receipt of order.

### 3. We guarantee fast and reliable supply.

We not only develop complex system solutions, but also produce these systems ourselves. More importantly, we guarantee that we will continue to supply our customers even against the backdrop of highly fluctuating market demand. Even our prototypes offer efficient system solutions and usually quickly go into series production with only minor adjustments.



The internal production staff manufacture the most demanding of structural components



Empirical checks guarantee excellent service life and consistently high product quality



Increased system performance thanks to our high-precision assembly process

#### **4. We guarantee quality that is consistent and highly profitable.**

Our ambitious systems are constantly pushing physical boundaries. And yet they consistently and reliably deliver performance, while ensuring the highest possible quality («copy exactly»). For our customers this means the highest standards in terms of reliability and service life of their machinery, with minimal maintenance requirements and virtually no downtime. That's why SCHNEEBERGER Systems represent highly profitable solutions over time.

#### **5. We provide competent and non-bureaucratic support.**

For our customers the following applies: Whenever you need us, we are here for you, with minimum response times. After commissioning your system the team that developed it will continue to stand by your side to support you as your contact partner and will competently and efficiently investigate every customer request.

## EXAMPLE APPLICATIONS

# A brief overview.

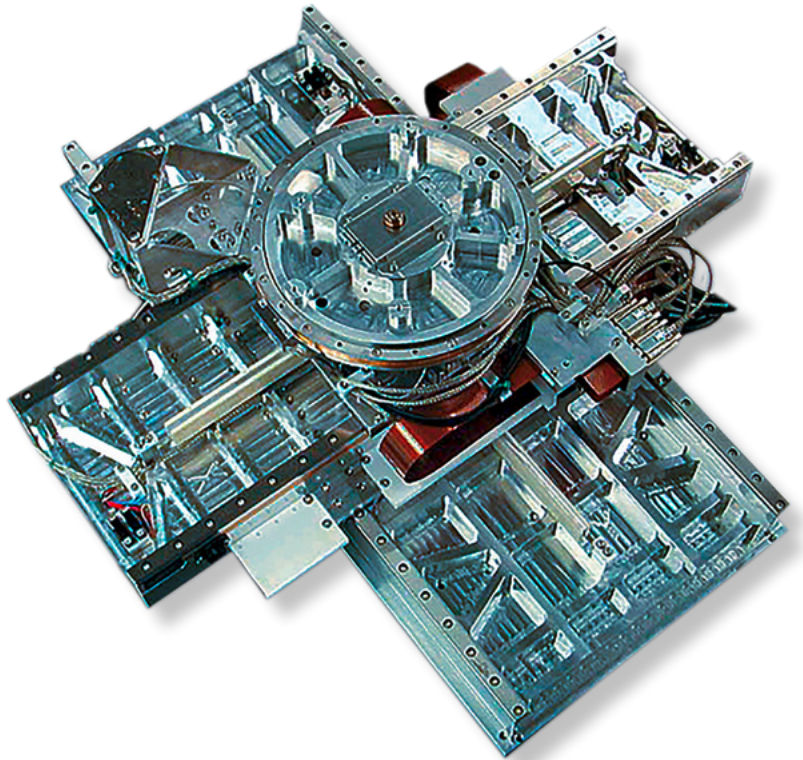
The range of applications from SCHNEEBERGER Systems is immense.

**Our customer-specific positioning systems also offer solutions to highly complex linear motion challenges. See below some of the spectacular examples of our applications from a range of industries.**

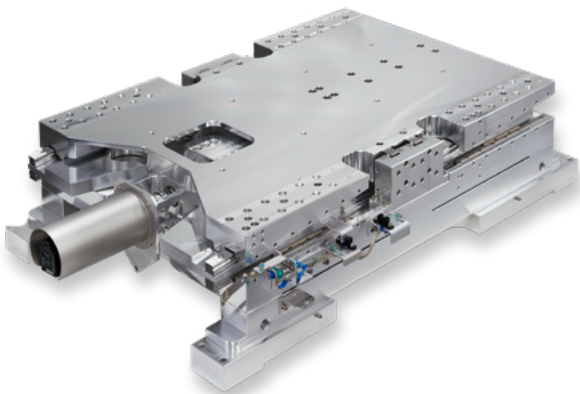
**Our positioning systems are used in all sorts of situations.**

Our engineers have a broad technical knowledge of many different branches of industry and can therefore quickly adapt to problems posed by our customers, including in new fields of business. Our great capacity for innovation allows us to develop complex positioning systems in the following markets:

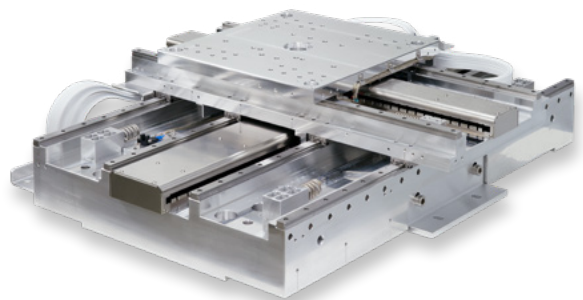
- Semiconductor
- Flat panel
- Solar – photovoltaics
- Electronics
- Optical
- Printing
- Laser processing
- Dental and medical technology



Semiconductor industry:  
E-beam wafer vacuum inspection

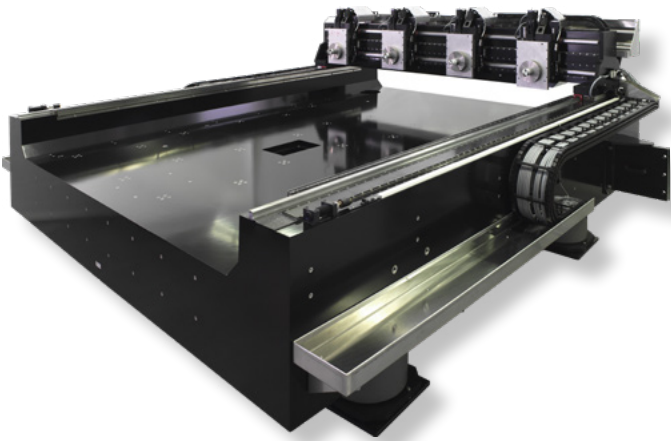


Semiconductor industry:  
E-beam wafer vacuum inspection

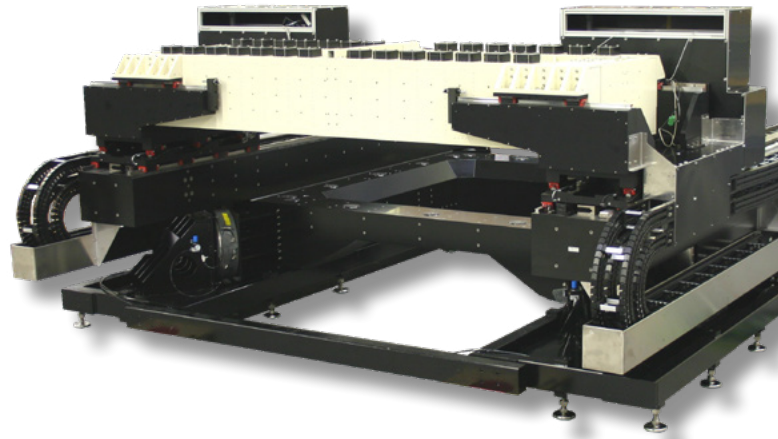


Semiconductor industry:  
E-beam wafer vacuum inspection and metrology

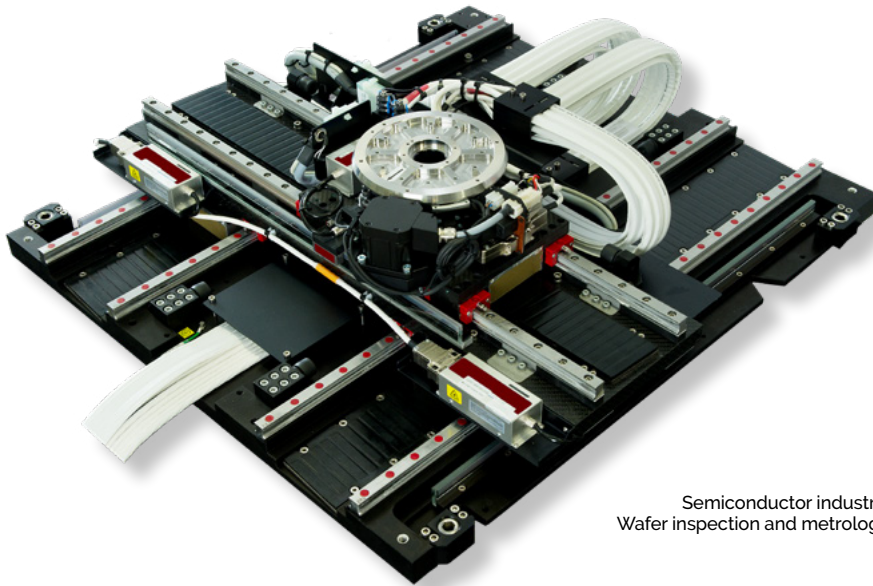




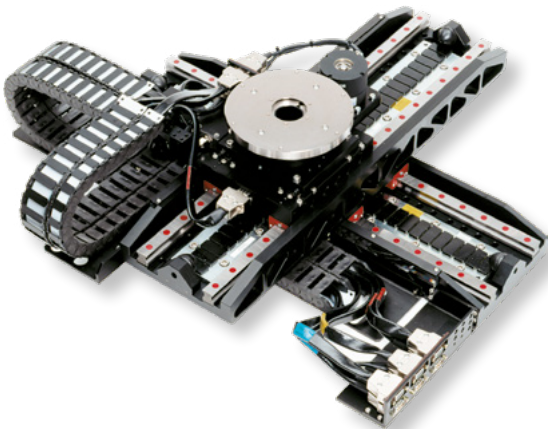
Flat Panel Display (FPD) industry:  
Metrology of the photospacer



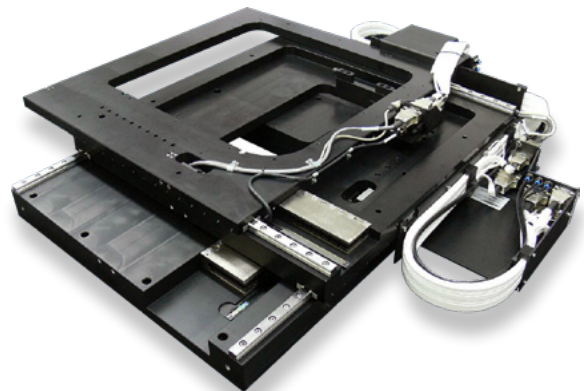
Flat Panel Display (FPD) industry:  
Printing individual pixels using inkjet technology



Semiconductor industry:  
Wafer inspection and metrology



Semiconductor industry:  
Wafer inspection and metrology



Semiconductor industry:  
Mask inspection and repairs

[www.schneeberger.com](http://www.schneeberger.com)

PROSPECTUSES

- COMPANY BROCHURE
- CUSTOMIZED BEARINGS
- GEAR RACKS
- LINEAR BEARINGS AND RECIRCULATING UNITS
- MINERAL CASTING SCHNEEBERGER
- MINISLIDE MSQSCALE

- MINI-X MINIRAIL / MINISCALE PLUS / MINISLIDE
- MONORAIL AND AMS PROFILED LINEAR GUIDEWAYS WITH INTEGRATED MEASURING SYSTEM
- MONORAIL AND AMS APPLICATION CATALOG
- POSITIONING SYSTEMS
- SLIDES



[www.schneeberger.com](http://www.schneeberger.com)